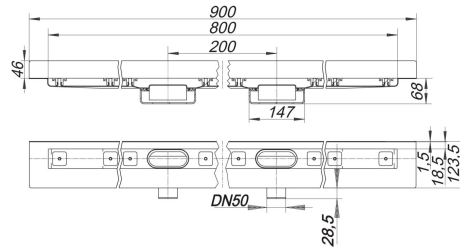
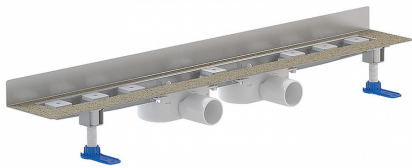


21. November 2019

DALLMER**shower channel CeraLine Nano W Duo 800 mm, DN 50**

Product No. **522290**
 EAN: 4001636522290
 Discount group: 8



Linear drainage for installation at wall
 with two drain bodies, outlet DN 50 horizontal

specification:

- sound absorbing height adjustable levelling legs
- integral sand coated flange for secure bonding of under-tile waterproofing
- removable trap insert, 24 mm water seal
- height adjustable screws
- temporary blanking plate
- tiling gauges
- edge trim jigs

material:

channel 304 stainless steel, trap polypropylene

Options for CeraLine Nano W:

- Any made-to-measure length up to 2000 mm can be supplied
- Upstands can be on back, back and one end or back and both ends
- Upstand can be set back for stone, marble wall finish

Please enquire!

The outlet connector can be supplied in ABS to suit British Standard sizes and PE-HD conforming to DIN EN 1519. Please enquire.

21. November 2019

shower channel CeraLine Nano W Duo 800 mm, DN 50

Flow rate tested to DIN EN 1253
(with 20 mm water over grate)

	Norm	DALLMER
DN 50	0.8 l/s	0.82 l/s

Product No.	Description	Dimensions
521019	adjustable pedestals built until July 2013	
526212	cover plate CeraLine Design brushed finish, lockable, 800 mm	800 mm
526045	cover plate CeraLine Standard, lockable, 800 mm	800 mm
521767	drain body CeraLine Nano, DN 50	DN 50
521033	levelling kit	
521088	Service device CeraLine	
520869	sound-insulating pad CeraLine, 500 x 250 mm	500 x 250 mm
521774	trap insert CeraLine Nano	