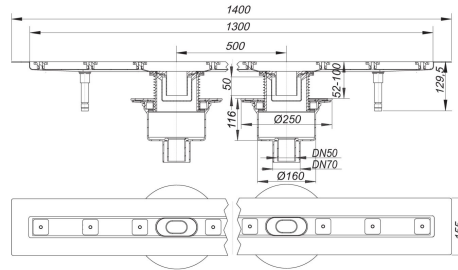


21. November 2019

**DALLMER**

## shower channel CeraLine vertical F Duo 1300 mm, DN 50/DN 70

Product No. **521682**  
 EAN: 4001636521682  
 Discontinued



conforming to DIN EN 1253

Linear drainage, with two floor drain bodies CIRCO V with +/- 15 mm lateral adjustment, outlet DN 50/DN 70 vertical

specification:

- sound-insulated height adjustable levelling legs
- integral sand coated flange for secure bonding of under-tile waterproofing
- removeable trap insert, 50 mm water seal
- height adjustable screws for levelling the cover-plate
- temporary blanking plate
- tiling gauges
- edge trim jig

material:

channel 304 stainless steel, drain body polypropylene

Options for CeraLine vertical F: Any made-to-measure length up to 2000 mm can be supplied. Please enquire!

Fire protection system 1 ( Part No. 515018) applicable.

The outlet connector can be supplied in ABS to suit British Standard sizes and PE-HD conforming to DIN EN 1519. Please enquire.

21. November 2019

## shower channel CeraLine vertical F Duo 1300 mm, DN 50/DN 70

Flow rate tested to DIN EN 1253  
(with 20 mm water over grate)

	Norm	DALLMER
DN 50	0.8 l/s	1.4 l/s
DN 70	0.8 l/s	1.4 l/s

Product No.	Description	Dimensions
521019	adjustable pedestals built until July 2013	
524287	cover plate CeraLine Design brushed finish, 1300 mm	1300 mm
524362	cover plate CeraLine Individual, 1300 mm	1300 mm
524201	cover plate CeraLine Standard, 1300 mm	1300 mm
515018	fire and sound-insulating collar - installation kit 1, DN 50/DN 70	DN 50/DN 70
521033	levelling kit	
521088	Service device CeraLine	
520494	stainless steel polish	
520845	trap insert CeraLine as of 2009	