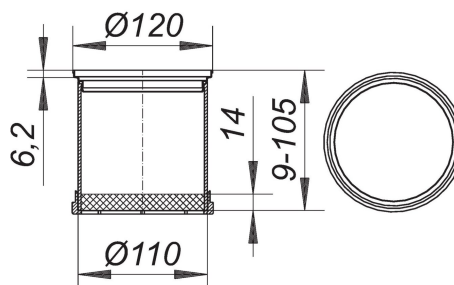


21. November 2019

**DALLMER****frame ER 12, 304 stainless steel, d: 120 mm**

Product No. **495334**  
 EAN: 4001636495334  
 Discount group: 3



used with floor drain types 40, 42 and 46, balcony drain body types 83 and 84,  
 frame 304 or 316Ti stainless steel, d: 120 mm,  
 spigot ABS, extendable with DN 100 plastic pipe

Product No.	Description	Dimensions
495013	drainage ring S 10	

Product No.	Description	Dimensions
495020	Back flow seal S 10, d: 110 mm	d: 110 mm
405227	floor drain body type 40 DallBit, DN 50	DN 50
405135	Floor drain body type 40 PE, DN 50/OD 50	DN 50
405128	Floor drain body type 40 S, DN 50	DN 50
422026	Floor drain body type 42 DallBit, inlet DN 40, DN 50	DN 50
420022	Floor drain body type 42 S, inlet DN 40, DN 50	DN 50
421722	Floor drain body type 42/3, 3 inlets DN 40, DN 50	DN 50
462053	Floor drain body type 46 DallBit, inlet DN 40, DN 50	DN 50
460059	Floor drain body type 46 S, inlet DN 40, DN 50	DN 50
501806	grate Aquarius 115	d: 115 mm
502353	grate Saturn 115	115 x 115 mm
501264	grate VER, d: 115 mm	d: 115 mm

21. November 2019

**DALLMER**

---

831569	raising piece type 85	
832566	raising piece type 85 DallBit	
502223	round grate Quadra d: 115 mm	d: 115 mm
495846	self-closing flap-valve S 10/12, d: 108,5 mm	