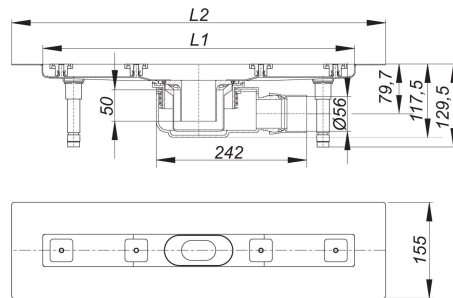
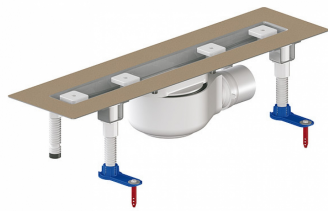


21. November 2019

DALLMER**shower channel CeraLine F Flex, 500 mm, 2"**

Product No. **521200**
 EAN: 4001636521200
 Discount group: 8

**Linear drainage**

The CeraLine Flex trap can be rotated 360 degrees to allow maximum flexibility during installation.

Outlet ABS, BS 56 mm/2" horizontal, with ball-joint, adjustable 0 - 15 degrees

specification:

- sound-insulated, height adjustable levelling legs
- sanded flange for secure bonding of under-tile waterproofing
- drain body with removable trap insert, 50 mm water seal
- height adjustable pedestals for levelling the cover-plate
- temporary blanking plate
- tiling gauges
- tile-trim jig

material:

channel 304 stainless steel,
 trap polypropylene