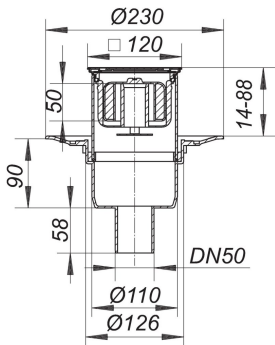


floor drain type 30 PRIMUS E 12, DN 50, 120 x 120 mm

Product No. 405333
EAN: 4001636405333
Discount group: 3



Seals when water dries out!
outlet DN 50 vertical

specification:
- 50 mm bell trap and mechanically sealing device
- height adjustable grating E 12
- temporary blanking plate

material:
polypropylene
frame 304 stainless steel, 120 x 120 mm, grate 304 stainless steel, load class
K 3 (300 kg)

The outlet connector can be supplied in ABS to suit British Standard sizes and PE-HD
conforming to DIN EN 1519. Please enquire.

Fire protection system 2 (Part No. 515025) applicable.

Flow rate tested to DIN EN 1253 Tab. 3,
(with 20 mm water over cover plate), conforming to DIN EN 274

	Norm	DALLMER
DN 50	0.4 l/s	0.5 l/s

Product No.	Description	Dimensions
495006	trap insert Primus, 50 mm, for frames 120 x 120 mm	

10. calendar_month_january 2020

DALLMER

Product No.	Description	Dimensions
515025	fire and sound-insulating collar - installation kit 2, DN 50	DN 50