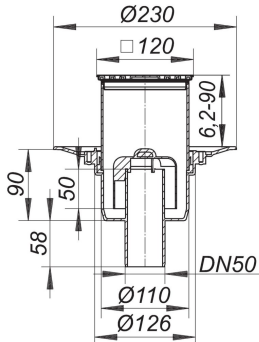


floor drain type 40 SE 12, DN 50, 120 x 120 mm

Product No. 405067
EAN: 4001636405067
Discount group: 3



conforming to DIN EN 1253
outlet DN 50 vertical

specification:
- height adjustable grating E 12
- removable trap insert, 50 mm water seal
- temporary blanking plate

material:
polypropylene
frame 304 stainless steel, 120 x 120 mm, grate 304 stainless steel, load class
K 3 (300 kg)

The outlet connector can be supplied in ABS to suit British Standard sizes and PE-HD
conforming to DIN EN 1519. Please enquire.

Fire protection system 2 (Part No. 515025) applicable.

Flow rate tested to DIN EN 1253
(with 20 mm water over grate)

	Norm	DALLMER
DN 50	0.8 l/s	1.34 l/s

Product No.	Description	Dimensions
590275	Bell trap for floor drain body type 40	

10. calendar_month_january 2020

405128	Floor drain body type 40 S, DN 50	DN 50
495341	frame ECS 12, 304 stainless steel, 120 x 120 mm	120 x 120 mm
501080	grate E 115, 115 x 115 mm	115 x 115 mm

Product No.	Description	Dimensions
495020	Back flow seal S 10, d: 110 mm	d: 110 mm
839503	clamp ring S 10	
515025	fire and sound-insulating collar - installation kit 2, DN 50	DN 50
831569	raising piece type 85	
832566	raising piece type 85 DallBit	
495075	Two-way seal CeraDrain type S 10	
790323	waterproofing collar S 10, EPDM, d: 420 mm	d: 420 mm
790316	waterproofing collar S 10, flexible PVC, d: 420 mm	d: 420 mm