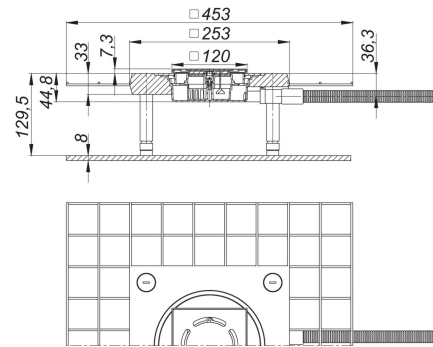
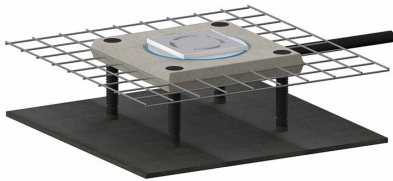


06. November 2020

DALLMER

pumped floor drain CeraDrain Active K 12, d: 20 mm, 120 x 120 mm

Product No. **527103**
 EAN: 4001636527103
 Discontinued



Sensor unit in a ABS housing

Specification sensor unit:

- remote integrated visual function display
- 5.5 m long cable for connection to CeraLine Aktiv installation box
- 20 mm solvent weld socket
- 5 m flexible corrugated tube with integrated cable pulling device

Specification drain body:

- polymer concrete collar with steel mesh reinforcement
- glassfibre mat reinforcement
- sound absorbing and height adjustable levelling legs
- temporary blanking plate
- height and laterally adjustable grating

material:

frame ABS, 120 x 120 mm
 grate 304 stainless steel, load class K 3 (300 kg)

CeraDrain Aktive pumped shower drainage system is ordered as two separate components - floor drain 527103 and installation box. 525819