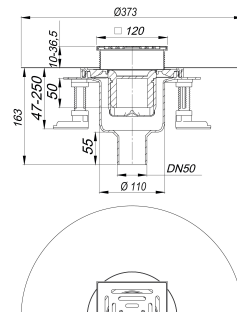
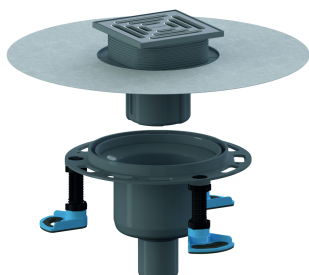


## floor drain DallDrain Pure vertical, DN 50/DN 100, 120 x 120 mm

Part number: 517142

GTIN: 4001636517142

Rebate group: 6



### Description:

floor drain DallDrain Pure vertical, DN 50/DN 100, 120 x 120 mm

conforming to DIN EN 1253

Floor drain including grating DallDrain Pure with stainless steel grate in ABS frame.

Outlet DN 50/DN 100 vertical.

### Specification

- Stainless steel grate, plastic frame
- Integrated screed anchoring
- Flexible, click-in sealing sleeve for secure connection to bonded and sheet waterproofing conforming to DIN 18534
- Fully removable, two-piece trap insert and rodding eye, 50 mm water seal (conforming to DIN EN 1253)
- Temporary blanking plate
- Three sound-insulated mounting feet for fixing and height adjustment 85 – 250 mm
- Spigot can be shortened for floorings 10 – 36 mm (including adhesive)

### Material

Polypropylene drain body and outlet, highly impact-resistant;

1.4301 stainless steel grate, load class K 3 (300 kg); spigot and frame in ABS

Pre-assembled set consisting of parts no. 517289 + 517234 + 517340.

Grating with positioning aid laterally adjustable +/- 9.5 mm.

Fire and sound-insulating collar - installation kit 2 (Part No. 515025) or

fire protection kit 12 (Part No. 515438) applicable.

### Flow rates tested to DIN EN 1253:

Nominal diameter	Product standard	Min. flow rate according to norm	Water level according to norm	Flow rate at water level 10 mm	Flow rate at water level 20 mm
DN 50	DIN EN 1253	0.80 l/s	20.00 mm	0.72 l/s	1.30 l/s

### Spare parts:

517289 grating DallDrain Pure, 120 x 120 mm

517340 mounting feet DallDrain

517357 trap insert DallDrain

517197 sealing sleeve DallDrain

Dallmer GmbH + Co KG · Wiebelsheidestraße 25 · 59757 Arnsberg · Tel.: +49 2932 9616-0 · Fax: +49 2932 9616-222

www.dallmer.com · info@dallmer.de

Subject to modifications due to technical development, errors and misprints